

Product Information Sheet

LCD Wall Mount

SWV250/BK

Medium Articulating
Screen sizes 22-40"

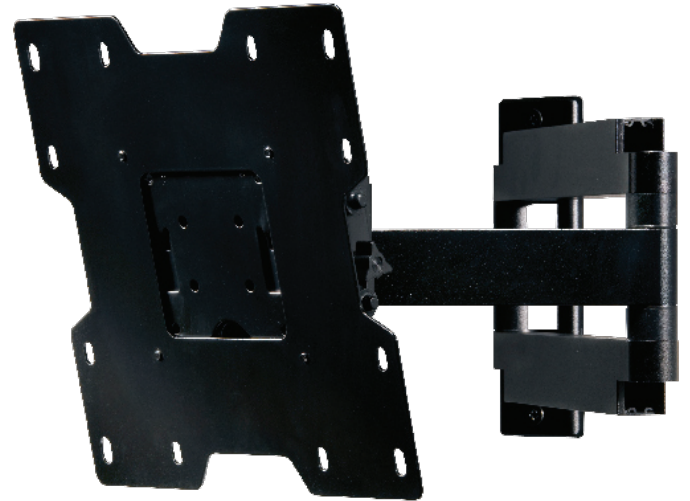
Part Number: SWV250/BK

Product Description

Ideally suited for medium LCD screens, the SmartMount SWV250 articulating wall mount gives you the widest range of screen adjustment to obtain the best viewing angle. The SWV250 allows you to tilt your screen forward or back, pan left or right and even extend your flat panel screen away from the wall.

Features & Benefits

- Quick and easy to install
- Ideally suited for LCD screens up to 40" in size, up to 36kg (80lbs) in weight
- Accommodates VESA 50x50, 75x75, 100x100, 200x100 and 200x200 mounting patterns - with extended fitment up to VESA 400x300 with included adaptors
- One touch tilt allows screen to be angled forwards (up to 15°) or back (up to 5°) without the use of tools
- Double arm construction allows screen to be extended up to 513mm from wall
- Level adjustment allows the screen to be turned +/- 7° even when installed for screen perfect alignment
- Three tensionable pivot points for versatile screen positioning
- Integrated cable management system controls connecting cables with movement of arm
- Black finish
- UL safety certified



Use highest recyclable content materials while maintaining our industry-leading strength and quality



Directive 2002/95/EC compliant to maintain the highest health and safety standards of our customers and environment



Setting the standard for safety around the globe



Upholding the highest compatibility standards



Certified quality in every product

Part No.	Product Family	Main Colour	Warranty	Weight Capacity
SWV250/BK	Peerless SmartMount	Black	5 Years	36kg/80lbs